

Making Connections



Transforming Mental Illness With Our Lives

- Support group for those with mental illness.
- Every Thursday evening
- 7:00 pm – 8:30 pm
- College Church of the Nazarene Olathe, KS
- Room S121
- Closed when Olathe School District is canceled.
- Closed Thanksgiving
- Closed Christmas

www.PathwayToHope.org
913.397.8552

Facilitators

Jan Graham, Lead
Deedra Dowd
Lynelle Vondergeest
Ron Warman, Jr.

Survivor Council Members

Lynelle Vondergeest, President
Sean Dermigny, Secretary
Deedra Dowd
Jan Graham
Emilee Ortiz
Brad Schrum
Ron Warman, Jr.



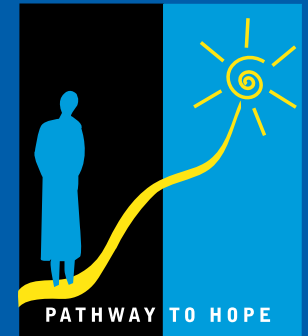
Pathway To Hope

Center of Grace
520 S. Harrison # 206
Olathe. KS 66061

www.PathwayToHope.org
913.397.8552

Survivors Group

Pathway To Hope.org



Survivors Group Council Members

Transforming Mental Illness With Our Lives

www.PathwayToHope.org
913.397.8552

Survivor Support Groups

Transforming Mental Illness With Our Lives



Mission Statement

Our survivor group exists to

Encourage

Educate

and

Empower

survivors of mental illness

by providing

*a safe community
for social networking*

resources

and

an atmosphere

for our recovery.

Transforming Mental Illness With Our Lives

- Managing our illness
- Medication education
- Living at Blake House
- Living independently
- Volunteering
- Attending college classes
- Assisting with Fund-raising
- Working part-time
- Working full time



Who We Are

men	women	myself
married	single	parent
son	divorced	sister
working	student	teen
survivor's	independent	friend

Survivor Success Stories

- The most important piece of the puzzle is my meds. Without the meds, I am a frightened, confused person.

With the meds, I'm someone's full-time employee and living on my own.

- *I always feel better when I leave group. I know there are people that truly care.*

I am able to share my mental health concerns with people in my same position.

- Sharing and fellowship with those who can relate to the highs and lows of my days and nights!

- *I come to group to be grounded. Like a plane, sometimes I've been up too long need to land. Pathway to Hope is a safe landing strip. Ron W.*

